

**SYMBOLS**

- ETC Autoyoke 19deg 575w
  - ETC S4 19deg 575w
  - ETC S4 26deg 575w
  - ETC S4 36deg 575w
  - ETC S4 50deg 575w
  - ETC S4 PAR VNSP 575w
  - ETC S4 PAR NSP 575w
  - ETC S4 PAR MFL 575w
  - ETC S4 PAR WFL 575w
  - ETC S4 Parnel 750w
  - PAR 64 VNSP 1kw
  - PAR 64 NSP 1kw
  - PAR 64 MFL 1kw
  - PAR 64 WFL 1kw
  - Colortran 6' Fresnel 1kw
  - 12' Fresnel 5kw
  - Mini-10 500w
  - Data Strobe
  - Practical
  - Birdie 150w
  - Strand Coda 4-cell Cyc Light 500w
  - 6 Ministrip 750w
  - House Light
  - Strobe Cap
  - Scroller
- Accessories**
- Top Hat
  - Barn Door
  - Template
  - Gobo Rotator
  - Iris
- KEY**
- UNIT
  - CHANNEL

**Limits of Liability**  
 THE DRAWING AND ALL THE DATA, MATERIAL, INFORMATION, LETTERS, INSTRUCTIONS, DESIGN, AND PLANS INDICATED THEREIN OR REFERENCED THEREIN ARE OWNED BY AND REMAIN THE PROPERTY OF THE DESIGNER AND HAVE BEEN CREATED AND DEVELOPED FOR USE ON AND IN CONNECTION WITH THE SPECIFIC PROJECT AND SPECIFIC CLIENT COMPANY. WITHOUT THE DESIGNER'S WRITTEN CONSENT, INFORMATION, LETTERS, INSTRUCTIONS, DESIGN, AND PLANS SHALL BE APPROPRIATED BY OR DISCLOSED TO ANY OTHER COMPANY, FIRM, OR PERSON FOR ANY USE OR RE-PURPOSE, UNLESS OTHERWISE EXCEPT BY THE SPECIFIC WRITTEN PERMISSION OF THE DESIGNER.  
 THE IMPLEMENTATION OF THIS LIGHTING DESIGN BY THE COMPANY MUST COMPLY WITH THE MOST RECENT APPLICABLE FEDERAL AND LOCAL SAFETY AND FIRE CODES. ALL DRAWINGS, EQUIPMENT LISTS, AND LIGHTING PLANS REPRESENT DESIGN INTENT AND REQUIRE COMPETENCY OF THE CONTRACTOR, ENGINEER, CONTRACTOR, HANGING, OR USE OF THE LIGHTING EQUIPMENT WHICH IMPLEMENTS THIS DESIGN.

- NOTES**
- Tick marks are on 18" centers
  - Please hang Autoyoke spanners in between Catwalk Pipe and Toe Rail
  - Please provide spare barn doors, half hats and top hats for focus
  - Please provide extra cuts of R119 and R132 for focus

- Revisions**
- 1.6.13 - Preliminary plot, for hang
  - 1.13.13 - Specials, Autoyokes added
  - 2.9.13 - Final plot, post tech

**Titus Andronicus**

UCSD Department of Theatre and Dance / The La Jolla Playhouse

Mandell Weiss Forum Theatre

Light Plot Catwalks

Plate 1 of 4

Lighting Designer: Kristin Hayes

Director: Joshua Kahan Brody

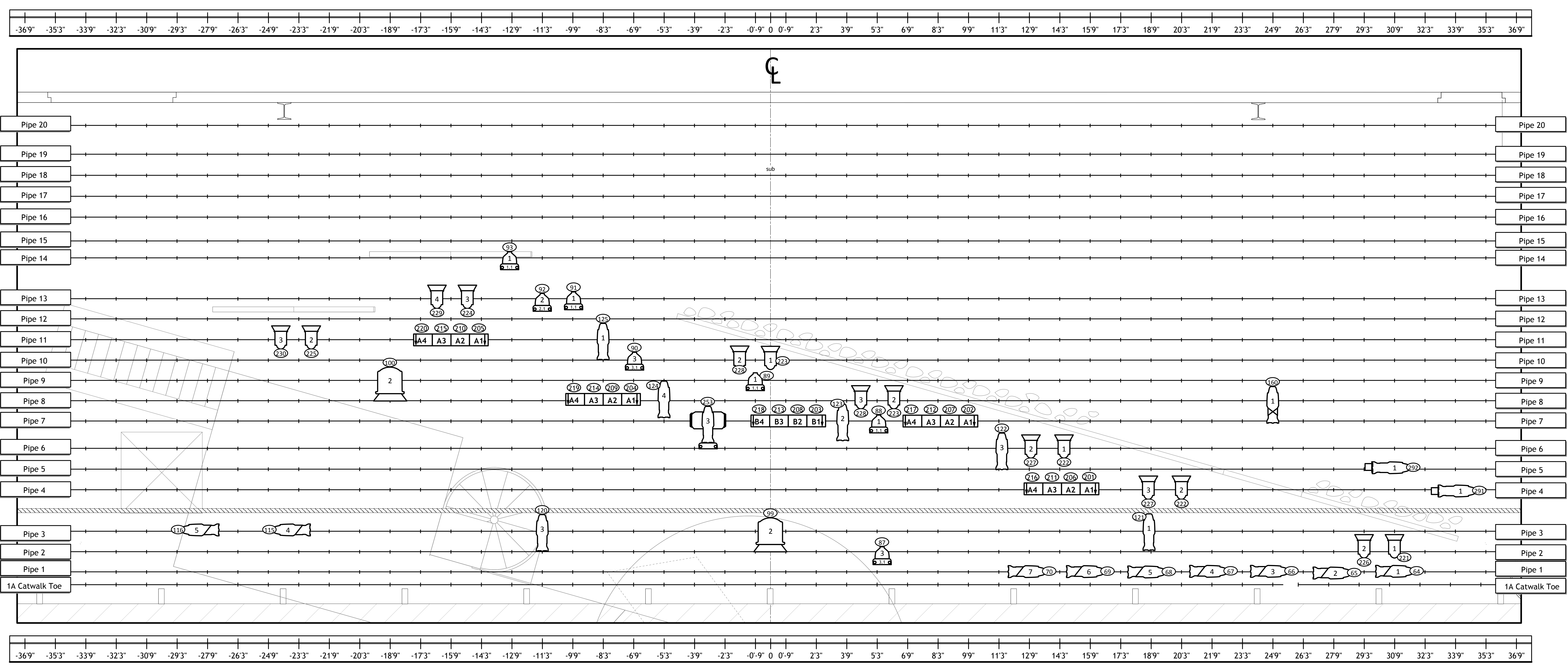
Scenic Designer: Christopher Scott Murillo

Lighting Supervisor: Mike Doyle

Drawn By: KMH

Date: 2.9.13

Scale: 1/2" = 10'



**SYMBOLS**

- ETC Autoyoke 19deg 575w
- ETC S4 19deg 575w
- ETC S4 26deg 575w
- ETC S4 36deg 575w
- ETC S4 50deg 575w
- ETC S4 PAR VNSP 575w
- ETC S4 PAR NSP 575w
- ETC S4 PAR MFL 575w
- ETC S4 PAR WFL 575w
- ETC S4 Parnel 750w
- PAR 64 VNSP 1kw
- PAR 64 NSP 1kw
- PAR 64 MFL 1kw
- PAR 64 WFL 1kw
- Colortran 6' Fresnel 1kw
- 12' Fresnel 5kw
- Mini-10 500w
- Data Strobe
- Practical
- Birdie 150w
- Strand Coda 4-cell Cyc Light 500w
- 6' Ministrip 750w
- House Light
- Strobe Cap
- Scroller

**Accessories**

- Top Hat
- Barn Door
- Template
- Gobo Rotator
- Iris

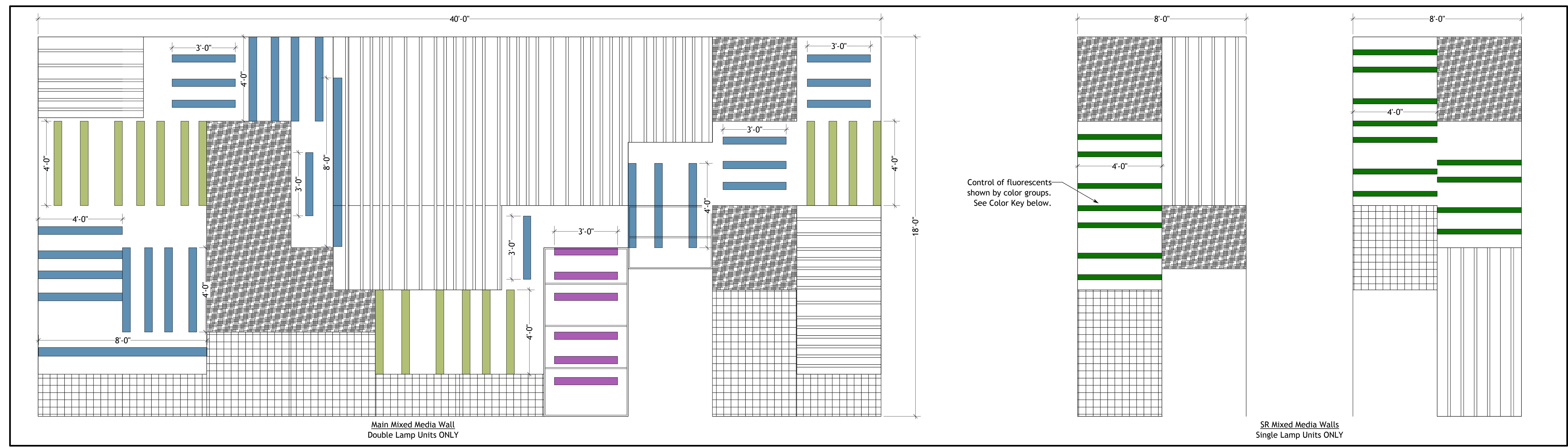
**KEY**

# UNIT  
CHANNEL

**Limits of Liability**

THE DRAWING AND ALL THE DATA, DETAILS, INFORMATION, LETTERS, INSTRUCTIONS, ORDERS, AND PLANS INDICATED HEREIN OR REFERENCED HERETOBY ARE OWNED BY AND ARE THE PROPERTY OF THE DESIGNER AND HAVE BEEN CREATED AND DEVELOPED FOR USE ON AND IN CONNECTION WITH THE SPECIFIC PROJECT AND SPECIFIC COMPANY. REVIEW OF THIS DRAWING, AND ANY SUCH DATA, DETAILS, INFORMATION, LETTERS, INSTRUCTIONS, ORDERS, AND PLANS SHALL BE SUPERVISED BY THE DESIGNER OR ANOTHER QUALIFIED PERSON EMPLOYED BY THE DESIGNER TO VERIFY THE ACCURACY OF THE INFORMATION AND TO ENSURE THAT THE INFORMATION IS COMPLETE AND CORRECT. THE DESIGNER SHALL NOT BE RESPONSIBLE FOR ANY DAMAGE, LOSS, OR INJURY, INCLUDING BUT NOT LIMITED TO, DAMAGE TO PROPERTY, PERSONAL INJURY, OR DEATH, ARISING FROM THE USE OF THE INFORMATION PROVIDED HEREIN, EXCEPT AS SPECIFICALLY WRITTEN HEREOF BY THE DESIGNER.

Overstage



**Front Elevation**

Mixed Media Walls with Fluorescent Layout

Color Key	Color	Channel
[Purple]	271	
[Green]	272	
[Blue]	273	
[Red]	274	

**NOTES**

- Tick marks are on 18" centers
- Please provide spare barn doors, half hats and top hats for focus
- Please provide extra cuts of R119 and R132 for focus

**Revisions**

- 1.6.13 - Preliminary plot, for hang
- 1.13.13 - Specials, Autoyokes added
- 2.9.13 - Final plot, post tech

**Titus Andronicus**

UCSD Department of Theatre and Dance / The La Jolla Playhouse

Mandell Weiss Forum Theatre

**Light Plot Overstage & Media Wall**

Plate 2 of 4

Lighting Designer: Kristin Hayes

Director: Joshua Kahan Brody

Scenic Designer: Christopher Scott Murillo

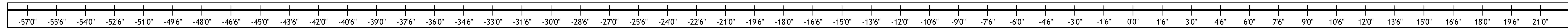
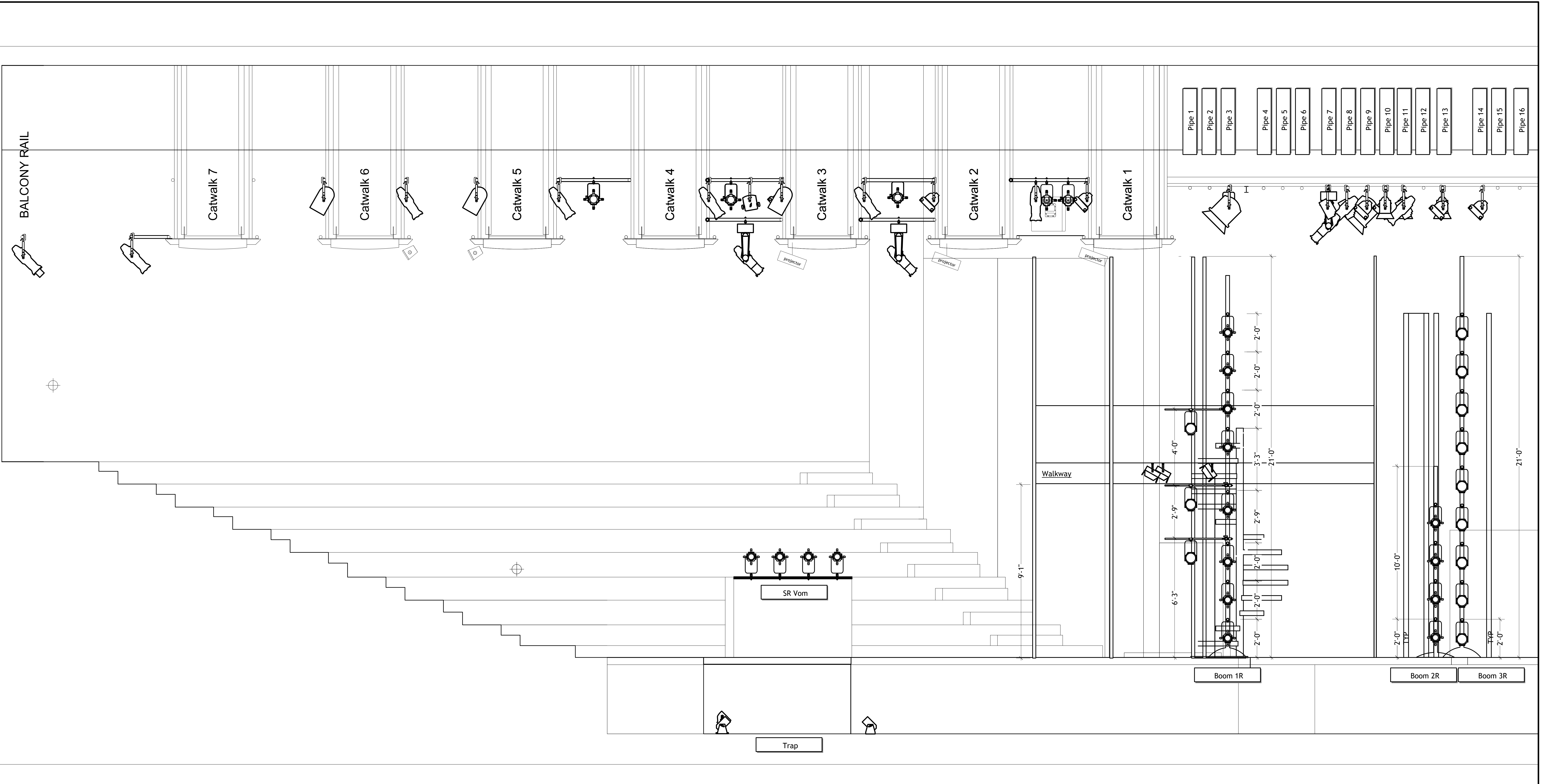
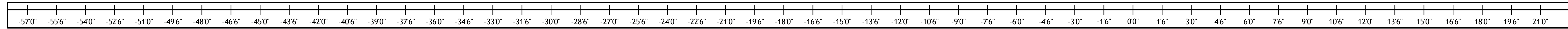
Lighting Supervisor: Mike Doyle

Drawn By: KWH

Date: 2.9.13

Scale: 1/2" = 10'





**SYMBOLS**

- ETC Autoyoke 19deg 575w
- ETC S4 19deg 575w
- ETC S4 26deg 575w
- ETC S4 36deg 575w
- ETC S4 50deg 575w
- ETC S4 PAR VNSP 575w
- ETC S4 PAR NSP 575w
- ETC S4 PAR MFL 575w
- ETC S4 PAR WFL 575w
- ETC S4 Parnel 750w
- PAR 64 VNSP 1kw
- PAR 64 NSP 1kw
- PAR 64 MFL 1kw
- PAR 64 WFL 1kw
- Colortran 6" Fresnel 1kw
- 12" Fresnel 5kw
- Mini-10 500w
- Data Strobe
- Practical
- Birdie 150w
- Strand Coda 4-cell Cyc Light 500w
- 6" Ministrip 750w
- House Light
- Strobe Cap
- Scroller

- Accessories**
- Top Hat
  - Barn Door
  - Template
  - Gobo Rotator
  - Iris
- KEY**
- UNIT
  - CHANNEL

**Limits of Liability**

The drawing and all the details, sketches, information, lists, instructions, orders, and plans provided by the designer are intended for the use of the client and are not to be used for any other purpose. The client is responsible for the proper installation and use of the lighting equipment. The designer is not responsible for any damage to the lighting equipment or for any injury or loss of life resulting from the use of the lighting equipment.

**NOTES**

1.6.13 - Preliminary plot, for hang  
 1.13.13 - Specials, Autoyokes added  
 2.9.13 - Final plot, post tech

**Revisions**

1.6.13 - Preliminary plot, for hang  
 1.13.13 - Specials, Autoyokes added  
 2.9.13 - Final plot, post tech

**Titus  
Andronicus**

UCSD Department of Theatre and Dance /  
The La Jolla Playhouse

Mandell Weiss Forum Theatre

**Light Plot  
Section**

**Plate 4 of 4**

Lighting Designer:  
**Kristin Hayes**

Director:  
Joshua Kahan Brody

Scenic Designer:  
Christopher Scott Murillo

Lighting Supervisor:  
Mike Doyle

Drawn By: KMH  
 Date: 2.9.13  
 Scale: 1/2" = 10"